



LUCILIO ROGERIO APARECIDO ALVES

Researcher of Center for Advanced Studies on Applied Economics – Cepea
Economist, Master in Applied Economic, Doctor Course
University of São Paulo - USP
Luiz de Queiroz College of Agriculture - ESALQ
lualves@esalq.usp.br

SERGIO DE ZEN

Professor ESALQ/USP
Researcher of Center for Advanced Studies on Applied Economics – Cepea
Agronomist, PhD in Applied Economic
sergdzen@esalq.usp.br

MAURO OSAKI

Researcher of Center for Advanced Studies on Applied Economics – Cepea
Agronomist, Master in Applied Economic
mosaki@esalq.usp.br

Phone: 55 19 3429-8847

Fax: 55 19 3429-8829

<http://www.cepea.esalq.usp.br>

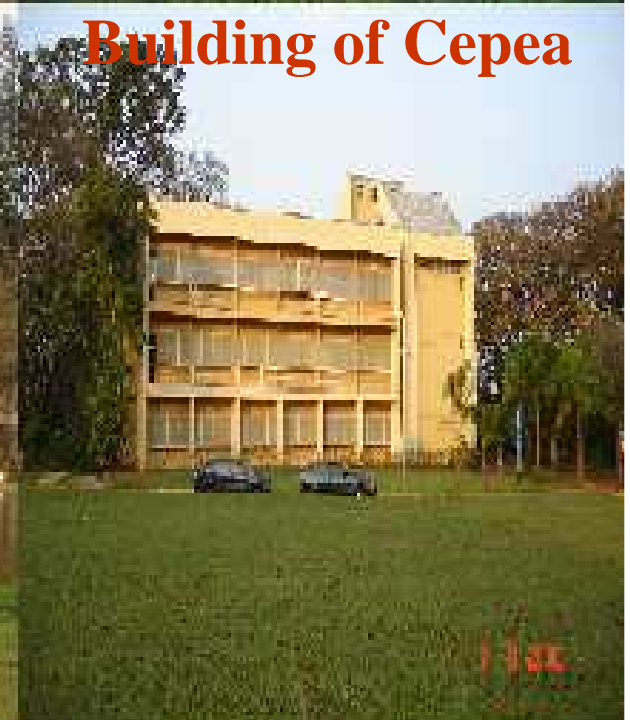
Esalq – Central building



Building of Cepea



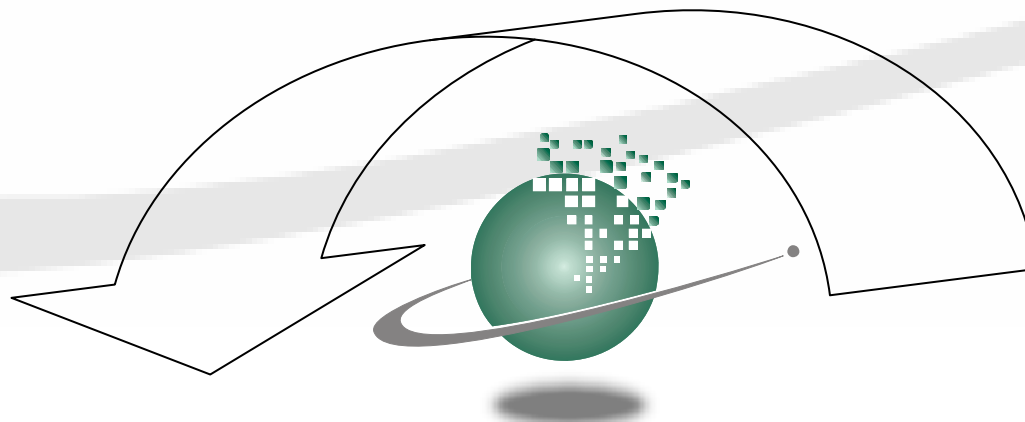
Building of Economics department





CEPEA

PARTNERS HIGHT QUALITY



**OTHER
INSTITUTIONS**

CEPEA

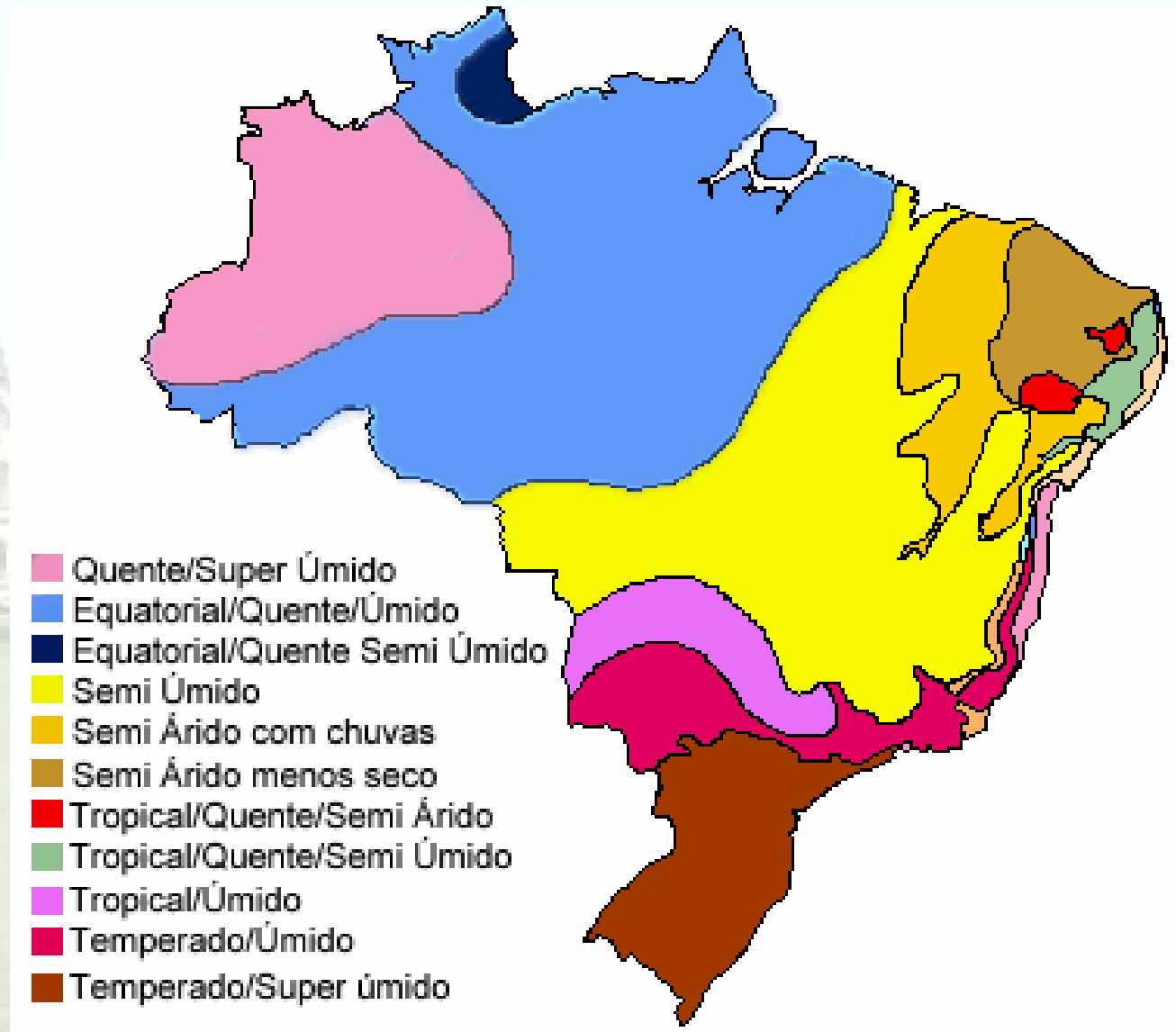
**GOVERNMENT
PRIVATE
SECTOR**



Climate in Brazil



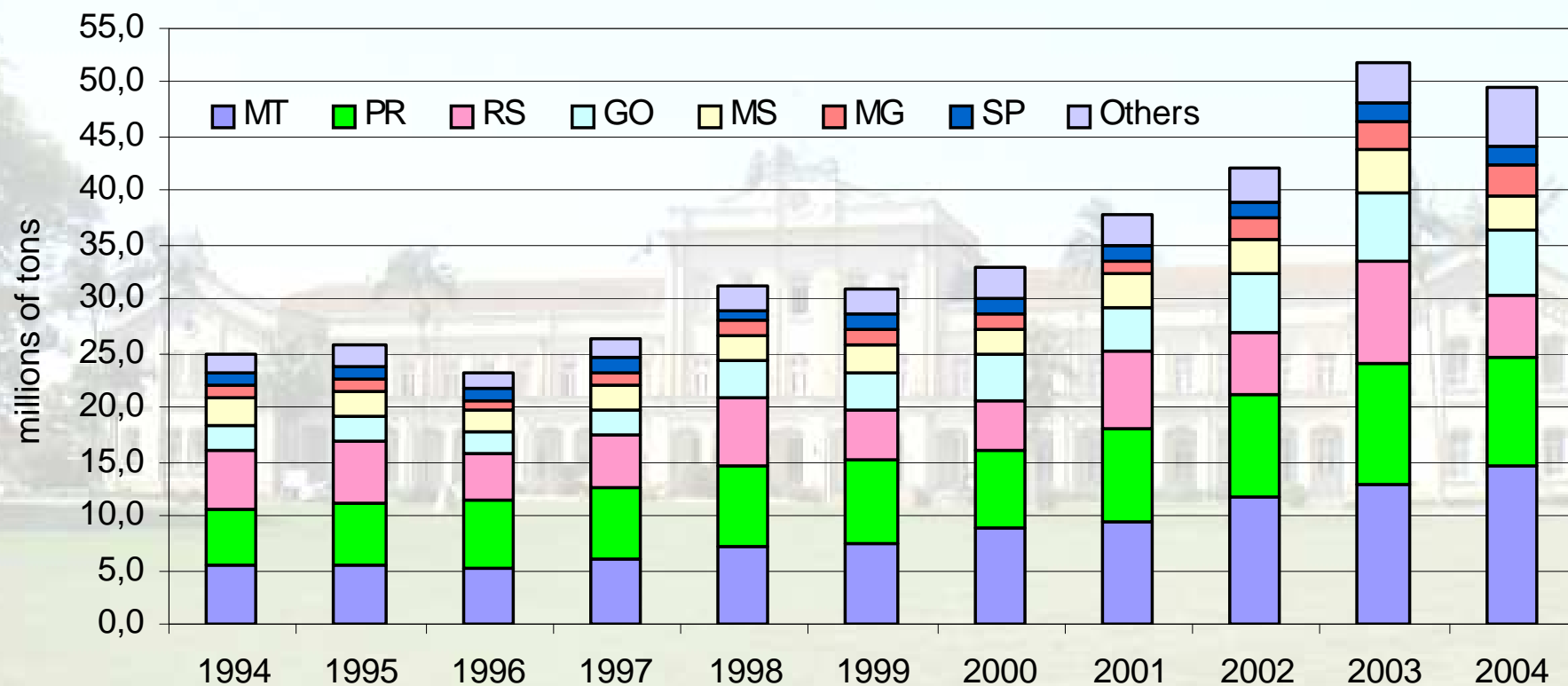
Climate in Brazil



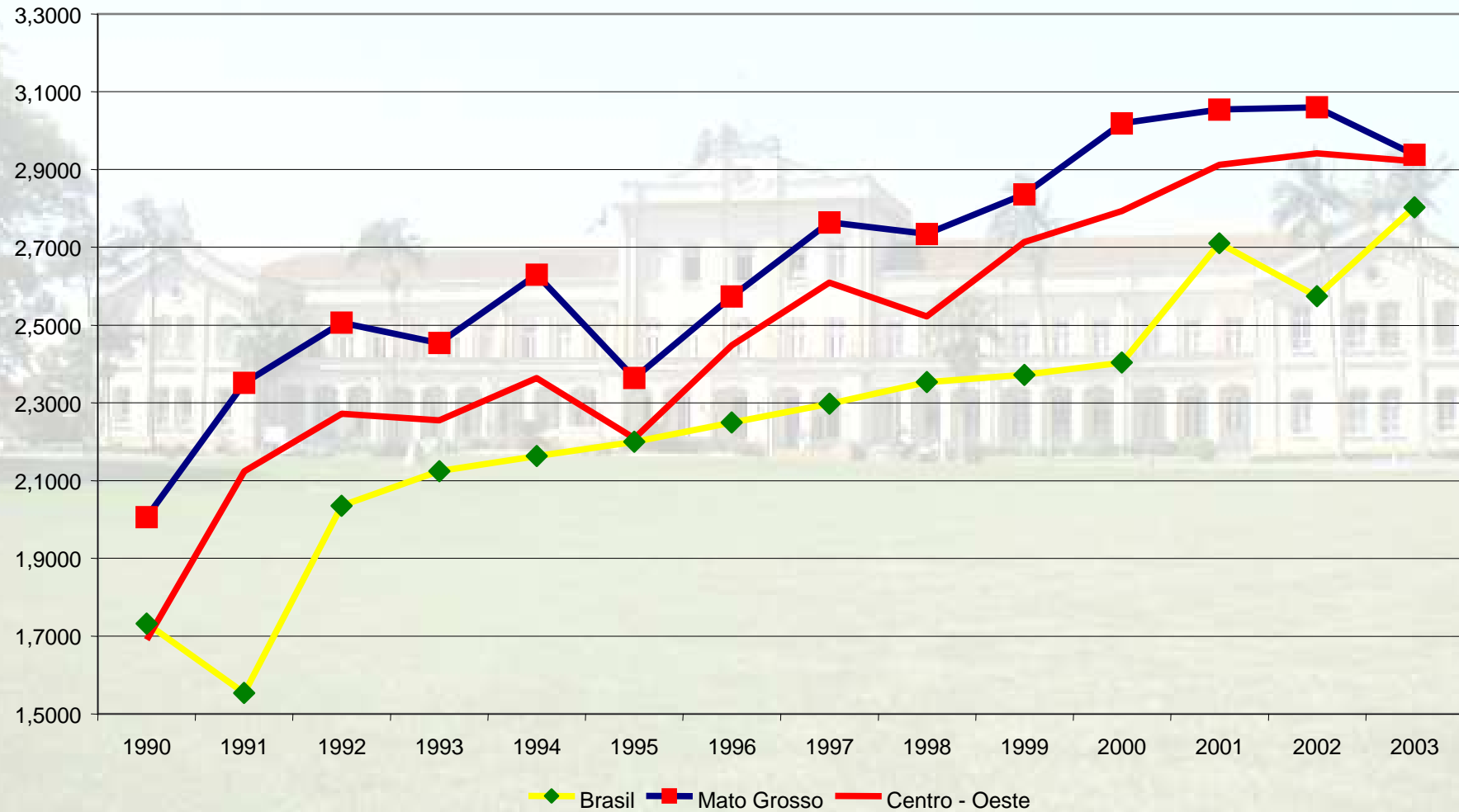
Brazil – types of vegetation



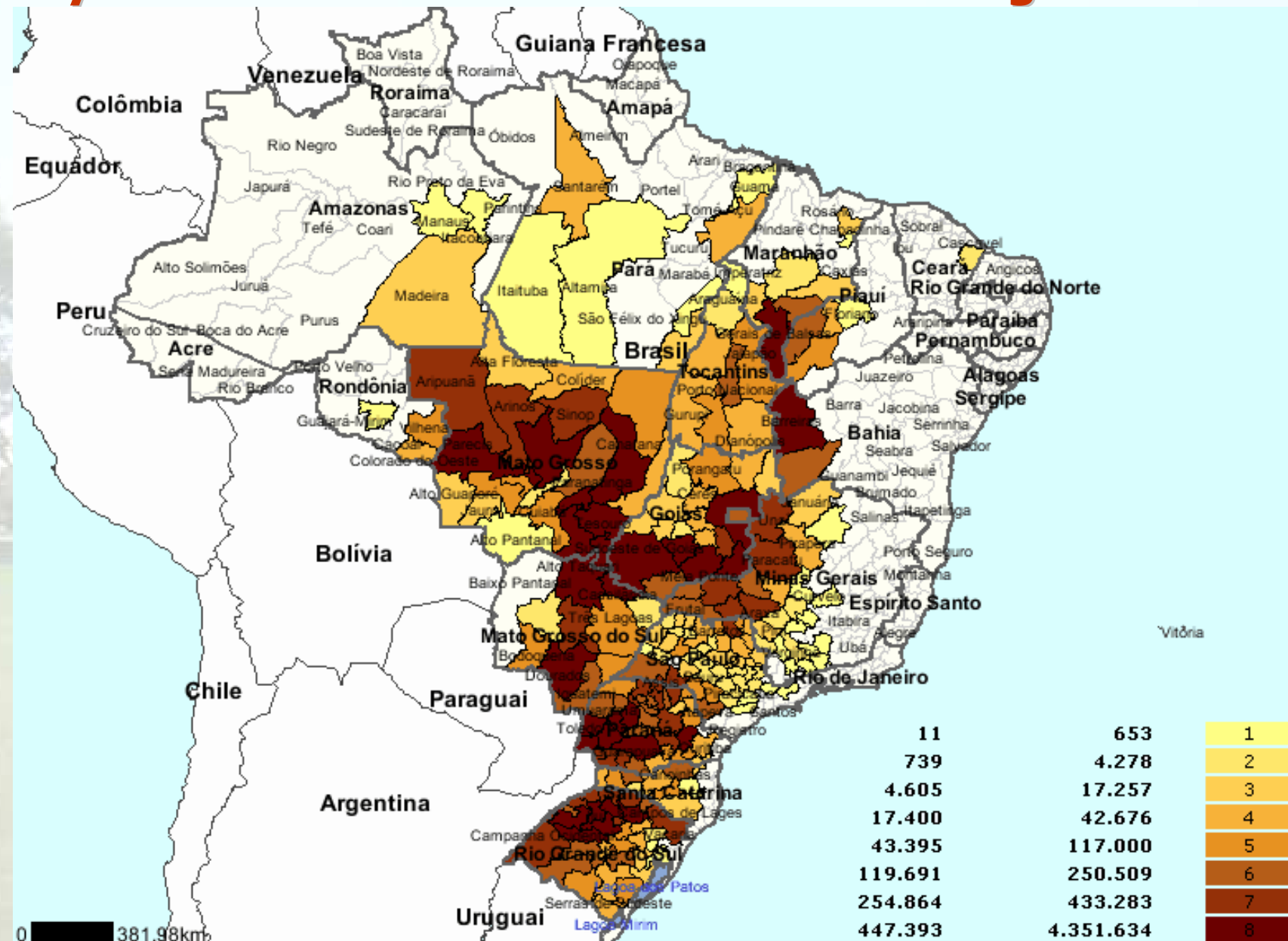
Soybean Production – Brazil and may county/state



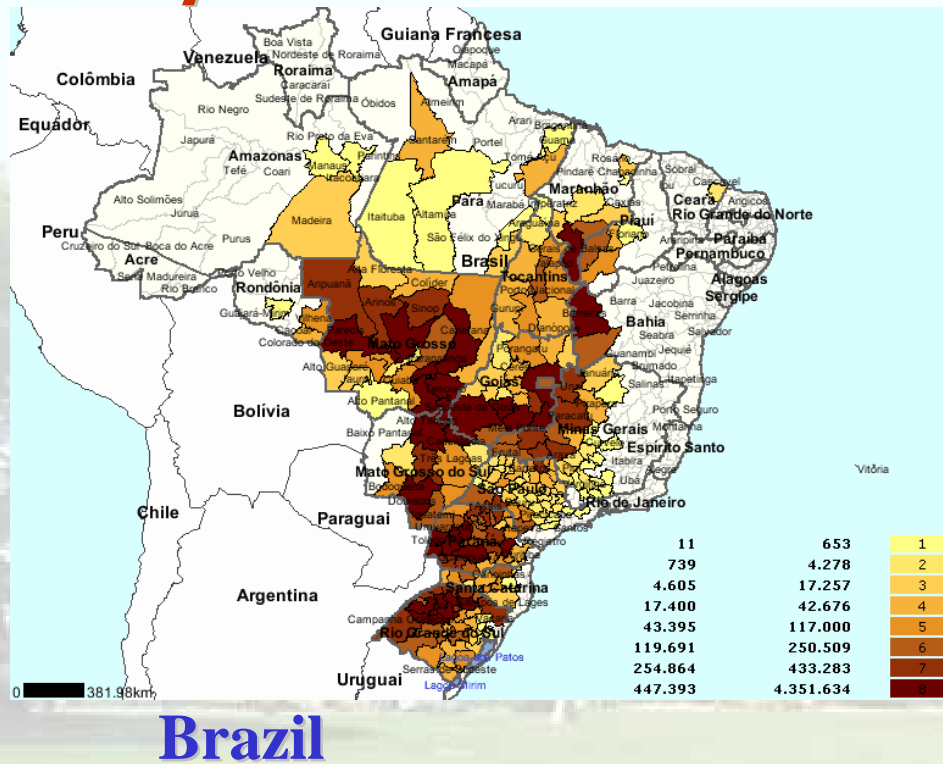
Soybean Productivity – Brazil and may state / region



Soybean Production – Brazil and micro regions - 2004



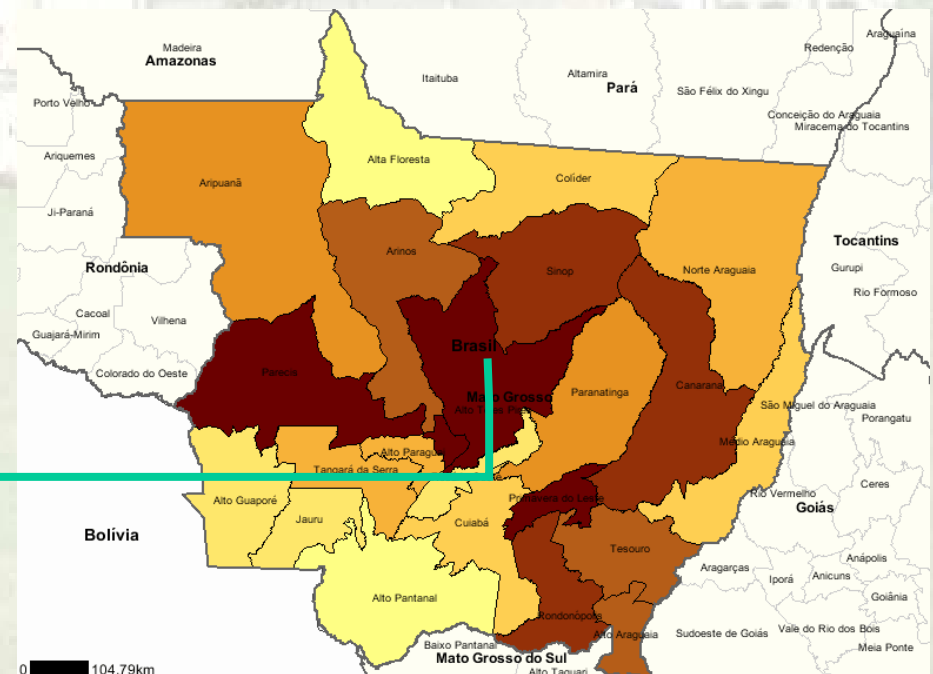
Soybean Production – Brazil and Mato Grosso - 2004



Brazil

Sorriso

Mato Grosso State



0 104.79km

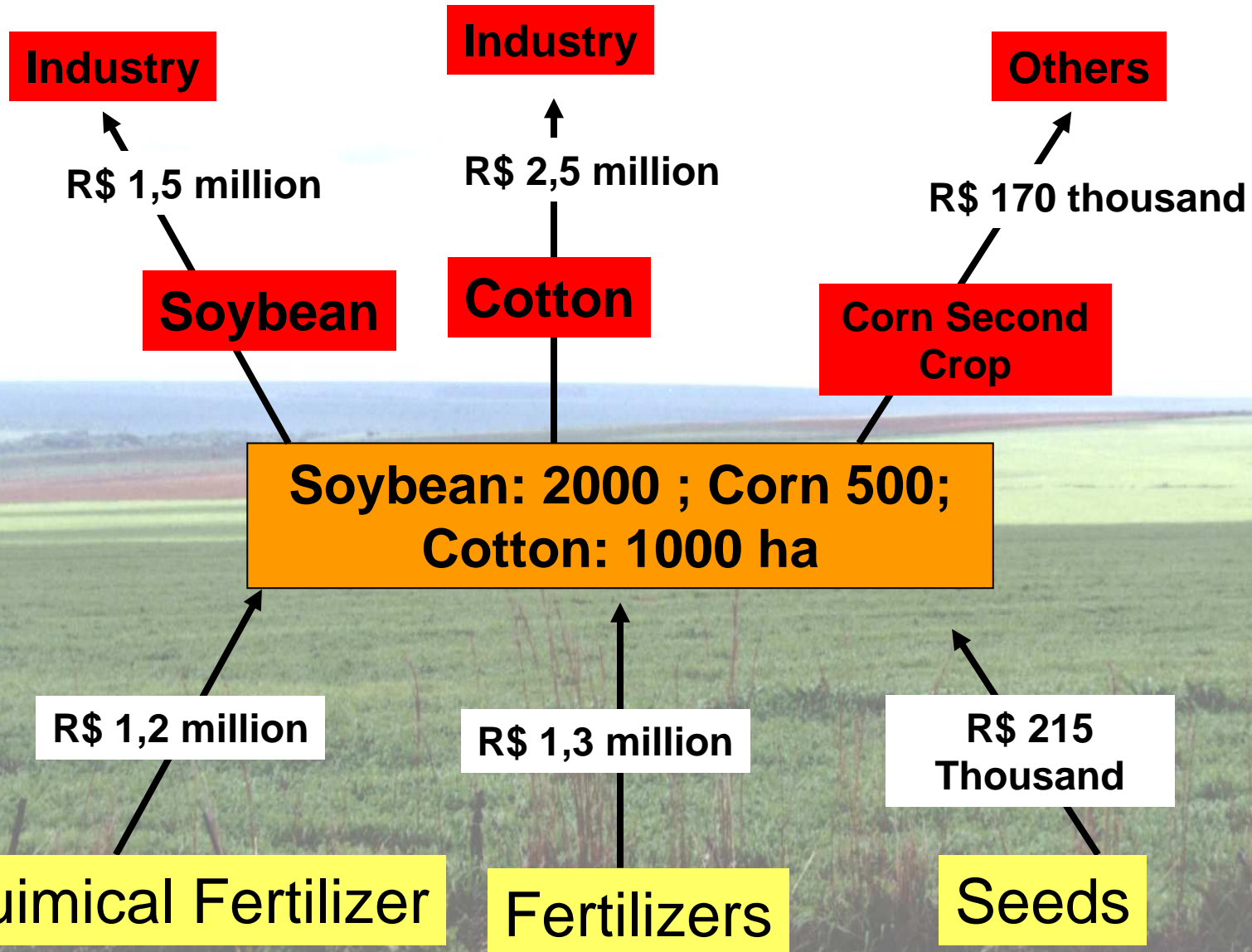
Farm Structure and Soybean Production

- **Different characteristics of farmers in regions;**
- **In South of country are more common small farmers than in the Middle West;**
- **In South there are mixed Grain and Livestock Farms;**
- **In Middle West, soybean is rotated with the corn crop;**
- **Typically planted in late October to early December;**
- **Typically harvested in early January to early May;**
- **The majority of soybean is planted in the direct system;**
- **Sorriso are the first and the biggest place that plant soybean in Brazil;**

Soybean Production – harvest

SOYBEAN - PERIOD OF HARVEST												
Região	Jan	Fev	Mar	Abr	Mai	Jun	Jul	Ago	Set	Out	Nov	Dez
Sul	15,5%	32,8%	34,5%	17,2%								
Sudeste		20,5%	39,2%	29,5%	10,8%							
Centro-Oeste	4,3%	23,5%	42,1%	24,4%	5,8%							
Nordeste		14,5%	36,9%	33,0%	13,1%	2,6%						
Norte		27,2%	43,3%	22,8%	6,7%							

Typical Farm - Primavera do Leste



Agriculture



Brazil – soybean production – Sorriso region



Brazil – soybean production – Sorriso region



Brazil – soybean production – Sorriso region



Brazil – soybean production





Futuro

- **Environmental**
- **Infra-structure**
- **Tecnology: more investment**
- **Management:**
 - **produce more with less inputs.**
 - **Risk Management - prices, productivity.**



CEPEA

<http://cepea.esalq.usp.br>

cepea@esalq.usp.br

55 019 3429 8800